

# CloudBees Continuous Delivery Acceleration

## The Prescriptive Journey for Organizations to Achieve the Benefits of Continuous Everything

Adoption of continuous integration and continuous delivery (CI/CD) practices is fundamentally changing how organizations deliver software. Gone are the days of quarterly software release cycles. **81% of IT decision makers** feel continuous delivery is helping their organizations bring value to customers and deliver on business goals. These companies push out releases weekly, daily and often multiple times a day.

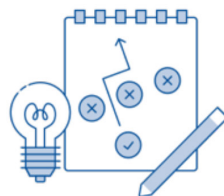
The business recognizes the value in your Shared Services team and is counting on you to make continuous improvement a reality. As DevOps matures from focused project teams to a pervasive business-wide practice, friction points become apparent. Deadlines tighten, infrastructure needs increase, snowflake servers pop up left and right, testing isn't as automated as you thought and you have an ungoverned proliferation of tools (open source and otherwise) across engineering teams. To achieve continuous improvement, you must reduce friction in processes including build, configuration, testing, deployment and monitoring through mature CI/CD practices. This requires an integrated approach, linking business strategy to software delivery, vision and focused execution.

That is what CloudBees provides. The CloudBees CD Acceleration Program offers a prescriptive journey for organizations to achieve the benefits of CD through meaningful changes to people, process and technology.



### PEOPLE

Address long standing organizational silos and skill set gaps that impede transformation through purposeful engagement, training and evangelism.



### PROCESS

Gain momentum through integrated, efficient and automated processes designed to achieve business outcomes by effectively aligning roles, decisions and capabilities.



### TECHNOLOGY

Maximize technology impact through planned implementations and adherence to best practices.

## At a Glance

- » 55% of software professionals cite environment configuration and set up as their top DevOps challenge.
- » 45% believe corporate culture is the most common barrier to achieving CD.
- » 33% cite coordination of team members and resources as their top DevOps challenge.

Addressing technology requirements alone is not enough to achieve continuous delivery. A holistic approach that drives meaningful changes to people, processes and technology is required.

Citation: 2018 DZone Guide to DevOps - Culture and Process

*“CloudBees’ expertise enabled us to quickly set up Jenkins for CI and CD and avoid the months or years it would have taken to build up the knowledge ourselves. Development is now faster, while quality and reliability have improved.”*

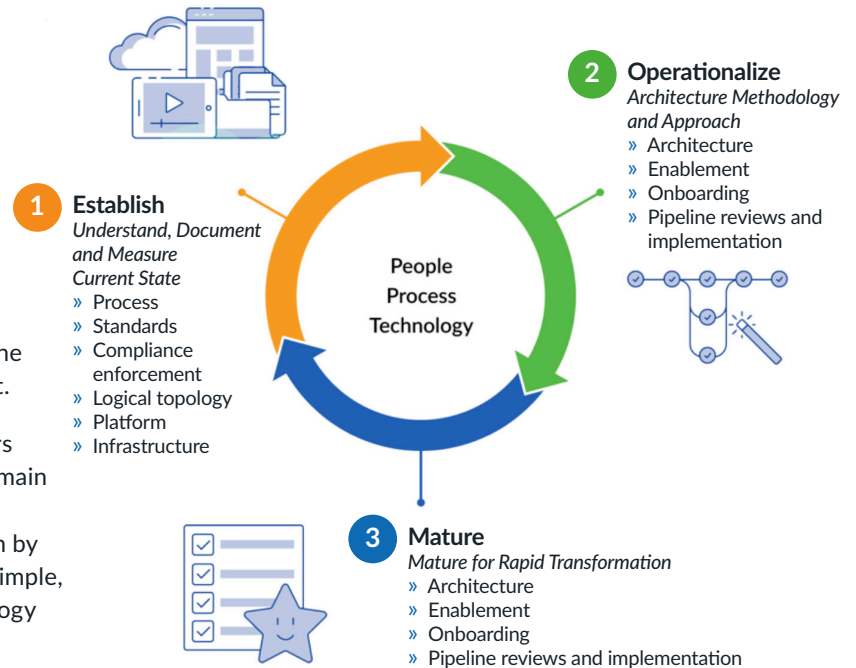
Sebastian Bosse  
Continuous Integration Project Lead  
Bosch

## The CloudBees CD Acceleration Journey

CD Acceleration is a prescriptive journey aimed at:

- » **Establishing** the foundational elements required for CI/CD.
- » **Operationalizing** key practices around CI/CD at enterprise scale.
- » **Driving maturity** to enable rapid rollouts across the organization, along with continuous improvement.

The CloudBees team consists of DevOps practitioners with specific CloudBees product and open source domain knowledge who will guide you every step of the way. They help drive and reinforce DevOps transformation by giving your people the skills they need and instilling simple, value-driven best practices to maximize your technology investments and optimize software value streams.



Key Resource	Key Benefits
<ul style="list-style-type: none"> <li>» <b>Customer success</b> is a dedicated team that advocates for you throughout the life of your CloudBees subscription.</li> </ul>	<ul style="list-style-type: none"> <li>» Assistance onboarding, training and getting started with the CloudBees Network, support portal and knowledgebase.</li> <li>» Collaborate to ensure the right resources are engaged at the right time to maximize business benefit.</li> <li>» Included with every CloudBees CI subscription.</li> </ul>
<ul style="list-style-type: none"> <li>» <b>Professional services</b> is a team of highly skilled consultants and technical success managers that provide expertise to achieve defined outcomes during your journey.</li> </ul>	<ul style="list-style-type: none"> <li>» <b>Discovery and planning:</b> Assess current and future state, security and governance and internal processes. Create key architectures, implementation roadmaps and team onboarding plans.</li> <li>» <b>Implementation and education:</b> Implement and configure CloudBees and Jenkins, Jumpstart programs for Kubernetes for Cloudbees, creation of security model, education and guidance on advanced CI/CD use cases.</li> <li>» <b>Onboarding and workshops:</b> Creation of key enterprise reference pipelines and planning workshops, migration planning and assistance, code reviews and reference architecture refinement.</li> </ul>
<ul style="list-style-type: none"> <li>» <b>DevOps support engineers</b> are a team of code-committing, Jenkins-certified professionals that will help tune your CloudBees product usage.</li> </ul>	<ul style="list-style-type: none"> <li>» Provides product support throughout the life of your subscription.</li> <li>» Included with every CloudBees CI subscription.</li> </ul>

## Engage the Team

Are you ready to start your CloudBees CD Acceleration Journey? [www.cloudbees.com/services](http://www.cloudbees.com/services)