

# Scallop headboard

URBAN OUTFITTERS

## Assembly Instructions

### TOOLS REQUIRED BUT NOT INCLUDED:

Drill, Phillips head screwdriver, Pencil

### WARNINGS:

Do not discard packing materials and the carton until assembly is complete. Ensure all parts are present prior to assembly.

Contact customer service immediately if any parts are missing.

Assemble all parts on a clean, smooth surface.

### CARE INSTRUCTIONS:

Avoid direct exposure to sunlight.

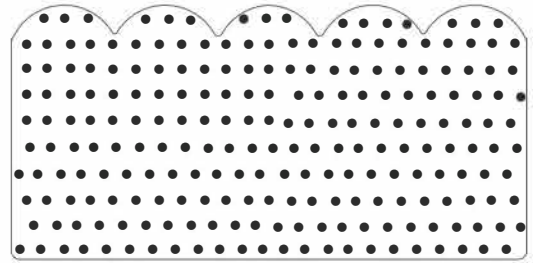
Blot spills with a clean, white cloth; do not rub.

Do not use harsh chemicals.

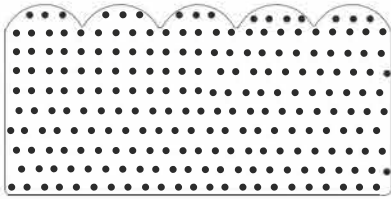
Before cleaning any part, test a small spot in a hidden area.

Do not over-tighten the parts.

The parts may loosen after initial use; re-tighten as necessary.



### PARTS INCLUDED:



(A) Headboard



(B) Cleat  
[48"]



(C) Machine Screw  
[D0.16"x1.25"]x9



(D) Plastic Anchor  
[D0.16"x1.25"]x8

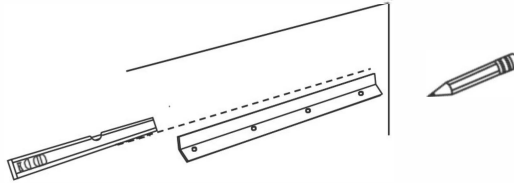
# Scallop headboard

URBAN OUTFITTERS

## Assembly Instructions

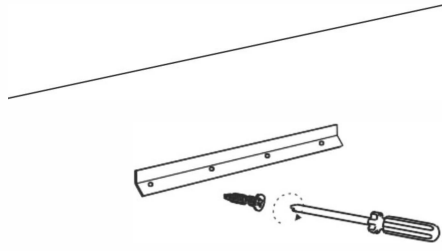
### STEP 1

Place the cleat (B) on the wall in a chosen location and ensure it is level. Mark the location of the mounting holes in the cleat (B) on the wall with a pencil, then remove it from the wall.



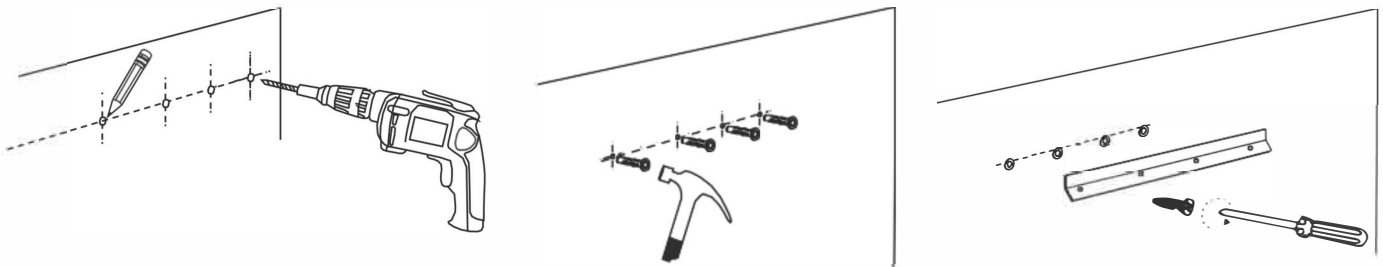
#### Stud installation:

Drill a 1/8" or 3mm hole in the wall at the marked locations. Align the cleat (B) with the pre-drilled holes in the wall. Fasten the cleat (B) directly to the wall with screws (C) using a Phillips head screwdriver or drill.



#### Drywall installation:

Drill a 5/16" or 8mm hole in the wall in the marked location. Insert the plastic anchors (G) into the wall at the marked location using a drill and a hammer. Align the cleat (B) with the anchors (G) in the wall. Fasten the cleat (B) directly to the wall with screws (C) using a Phillips head screwdriver or drill.



**The included hardware is intended for attachment to drywall or wooden wall surfaces, contact your local hardware store to find the correct anchor for alternative wall-types such as stone or brick.**

### STEP 2

With help hang, the headboard (A) onto cleat (B) to complete assembly.

