

**BMI**

a FitchSolutions Company

# Pharmaceutical Manufacturing Key Projects Data

BMI's Pharmaceutical Manufacturing Key Projects Data provides a comprehensive catalogue of 3,400 manufacturing facilities globally operated by 133 leading pharmaceutical and medical device companies.

Our experts collate and standardise information covering thousands of pharmaceutical manufacturing projects into an accessible format that will enable you to:



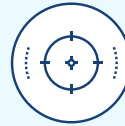
## Identify Trends

Assess key pharmaceutical manufacturing sector trends on a global, regional and country level.



## Drive Business Development

Identify potential clients and commercial opportunities such as new projects or project expansions.



## Track Competitor Activity

Monitor where your competitors are operating and identify potential market opportunities.



## Assess Risks

Evaluate potential risks and plan strategically by understanding operational status and project types of facilities worldwide.

## An Interactive Online Tool

The database is an interactive online tool, with functionality that allows you to search via country and type of manufacturing facility. The database displays information across a multitude of fields which can be quickly filtered to monitor over 3,400 pharmaceutical projects globally. All Pharmaceutical Manufacturing Key Projects Data can be seamlessly exported into Excel for additional insights, allowing you to perform further analysis or easily integrate data into your existing workflows.

Home / Pharmaceutical Manufacturing

**Project Data: Pharmaceutical Manufacturing**

Infrastructure Global Mines Liquefied Natural Gas **Pharmaceutical Manufacturing**

Pharmaceutical Manufacturing Projects

Export to Excel (5000 max)

Project ID	Project Name	Company Name	Parent/Subsidiary	Parent Company	Companies Involved	Country	Main Sector	Sub Sector	Status	Status Notes	Contract Manufact...
Q	Q	Q	Q	Q	Q	Q	Q	Q	Q	Q	Q
<input type="checkbox"/>	pharma_18	Abbott Barceloneta ...	Abbott Laboratories...	Parent	Abbott Laboratories...	Puerto Rico	Medical Devices	Cardiovascular	Operational	Site manufactures v...	No
<input type="checkbox"/>	pharma_48	Abbott Huechuraba ...	Abbott Laboratories...	Subsidiary	Abbott Laboratories...	Chile	Pharmaceuticals	Finished Dose Forms	Operational	Facility manufacture...	No
<input type="checkbox"/>	pharma_22	Abbott Menlo Park ...	Abbott Laboratories...	Parent	Abbott Laboratories...	United States	Medical Devices	Cardiovascular	Operational	Site manufactures c...	No
<input type="checkbox"/>	pharma_50	Domescos Can Lo In...	Domescos Medical L...	Subsidiary	Abbott Laboratories...	Vietnam	Pharmaceuticals	Finished Dose Forms	Operational	Site comprises of thr...	Yes
<input type="checkbox"/>	pharma_7	Menarini Adlershof ...	Berlin-Chemie AG (...)	Subsidiary	A.Menarini Industrie...	Germany	Pharmaceuticals	Finished Dose Forms	Operational	Site produces solid ...	No
<input type="checkbox"/>	pharma_9	Menarini Barcelona ...	Laboratorios Menari...	Subsidiary	A.Menarini Industrie...	Spain	Pharmaceuticals	Finished Dose Forms	Operational	Facility manufacture...	No
<input type="checkbox"/>	pharma_13	Menarini Florence O...	A.Menarini Industrie...	Parent	A.Menarini Industrie...	Italy	Pharmaceuticals	Finished Dose Forms	Under construction	The production plan...	No
<input type="checkbox"/>	pharma_11	Menarini Guatemala...	Latin Farma. S.A. (Gu...	Subsidiary	A.Menarini Industrie...	Guatemala	Pharmaceuticals	Finished Dose Forms	Operational	Site manufactures o...	No

**BMI**

a FitchSolutions Company



## Tracking The Manufacturing Activities Of The World's Top Pharmaceutical Companies

The database tracks the lifecycles of over 3,400 manufacturing facilities that are currently in operation, planned or primed for expansion. The data focuses on a total of 133 companies, including the top 100 pharmaceutical companies, 10 medical device companies and 23 pure Contract Manufacturing Organisations (CMOs), tracking the pharmaceutical manufacturing landscape in the lens of these key companies.

### FULL LIST OF COMPANIES TRACKED

Abbott	Bristol Myers Squibb	GSK	Merck KGaA	Sun Pharmaceuticals	Aenova (CMO)
Abbvie	Cadila	Hanmi	Merz	Taisho	Aesica (CMO)
Actelion	Celgene	Hikma	Mitsubishi Tanabe Pharma	Takeda	Almac (CMO)
Akorn Pharmaceuticals	Cheiljedang	Impax	Nichi-Iko	Teijin	Catalent (CMO)
Alexion	Chiesi	Indivior	Novartis	Teva Pharmaceuticals	Centrient (CMO)
Alfasigma	Cipla	Intas	Novo Nordisk	Torrent	Corden (CMO)
Allergan	CSL Limited	Ipsen	Ono Pharmaceutical	UCB	Daito (CMO)
Alvogen Inc	CSPC Pharmaceutical	Jazz	Orion Corporation	United Therapeutics	Delpharm (CMO)
Almirall	Daiichi Sankyo	Johnson & Johnson	Otsuka	Vertex	Divis (CMO)
Amgen	Dr. Reddy's	Kaken	Perrigo	Vifor Pharma	Evonik (CMO)
Amneal Pharmaceuticals	Eisai Co	Kowa	Pfizer	Viartis	Famar (CMO)
Apotex	Eli Lilly	KRKA	Pierre Fabre	Yuhan	Fareva (CMO)
Aspen	Endo Health	Kyorin	Recordati	Abbot Laboratories (MedDev)	Lonza (CMO)
Astellas	Esteve	Kyowa Kirin	Regeneron Pharmaceuticals	Baxter Healthcare (MedDev)	Nipro (CMO)
AstraZeneca	Ferring	Leo Pharma	Roche	Becton Dickinson (MedDev)	Patheon (CMO)
Aurobindo	Fresenius Kabi	Les Laboratoires Servier	Sanofi	Danaher (MedDev)	Prime European (CMO)
Bausch Health Companies	GC Biopharma	Lundbeck	Santen	GE (MedDev)	Recipharm (CMO)
Baxter	Gedeon Richter	Lupin	Sawai	Johnson & Johnson (MedDev)	Shandong Xinhua (CMO)
Bayer	Gilead Sciences	Mallinckrodt	Shionogi	Medtronic (MedDev)	Siegfried (CMO)
Biogen	Glenmark	Meiji	Shire + Baxalta	Philips (MedDev)	Vetter (CMO)
BioMarin	Grifols	Menarini Group	STADA Arzneimittel	Siemens (MedDev)	Zhejiang Hisun (CMO)
Boehringer Ingelheim	Grunenthal	Merck & Co	Sumitomo Pharma	Stryker (MedDev)	Zhejiang Huahai (CMO)

**BMI**

a FitchSolutions Company



## Types Of Facilities Tracked

Facilities that **manufacture pharmaceuticals**, including:

- Active Pharmaceutical Ingredients (APIs)
- Finished Dose Formulations
- Prescription drugs
- Biologic drugs
- Biosimilar drugs
- Generic drugs
- Vaccines

Facilities that **manufacture medical devices**, including:

- Anesthesia and Respiratory Devices
- Dental Devices
- Diabetes Care Devices
- Diagnostic Imaging
- Drug Delivery
- General Surgery
- Hospital Supplies
- Healthcare IT
- In Vitro Diagnostics
- Nephrology Devices
- Orthopedics

SEARCH FILTERS	
Company – Parent & Subsidiary	Contract Manufacturing Organisation vs In-house
Country	Number of employees
Sector (Pharmaceuticals or Medical Devices) and Sub-Sector	Facility Output (either by weight, volume or relevant quantity unit)
Project Name	Date of last project update
Status – Planned, Under Construction, Operational, Cancelled, Suspended or Closed	Value (USD Millions)
Project Type – Greenfield or Brownfield	Size (square metres)
Drug or Device names	Additional information (FDA Establishment Identifier, Project Address and other details)

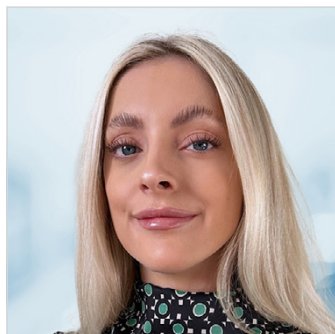
Sources: company reports and financial filings, local and international news sources, press releases, multilateral organisations and regulatory agencies. Maintenance: Manufacturing projects are checked regularly, and the database is updated biannually (~every 6 months).

**BMI**

a FitchSolutions Company



## Behind Our Research



### Kate Bennett

#### Head of Pharmaceutical Analysis

Based in London, Kate leads a global team of analysts identifying operational risks and opportunities across pharmaceutical markets, leveraging data and critical analysis to provide clients with strategic insights. Prior to joining BMI, Kate worked at a boutique consultancy specialising in competitive intelligence driven initiatives within the Pharmaceutical and Biotech sector. Kate graduated from University College London with an honours degree in Biomedical Science.

Our analysts will always be on hand to explain growth forecasts, present a regional outlook, or help our clients understand the implications of different industry risk scenarios. We call this 'Analyst Added Value'.

## About BMI

In an uncertain macroeconomic environment, BMI's systematic, independent and data-driven market insights, analysis and forecasts enable you to recognize and assess risks and opportunities across 200+ markets and 20+ industries.

For over 40 years, we have provided impartial and transparent analytics, data and research across themes, countries and sectors, with deep insight into emerging markets. Our detailed intelligence is frequent, consistent and systematic, enabling you to easily make comparisons and interrogate data to support your strategic plans and investment decisions.

Learn more at [fitchsolutions.com/bmi](https://fitchsolutions.com/bmi)

## Client Services

A dedicated team of client services professionals based in New York, London, Hong Kong, Singapore and Tokyo provide client support. You can contact this team by the following email [fscustomersupport@fitchsolutions.com](mailto:fscustomersupport@fitchsolutions.com) or the phone numbers below:

#### LONDON

+44 20 3530 2400

#### NEW YORK

+1 212 908 0800

#### HONG KONG

+852 2263 9999

#### SINGAPORE

+65 6796 7231

#### TOKYO

+81 3 6897 8986