



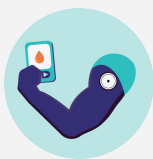
November 2025 PO Monthly Call

*Monday, November 10th @ 11am
Wednesday, November 12th @ 2pm*



AGENDA

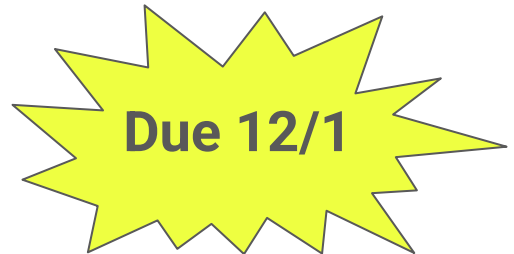
1. MCT2D Census Survey
2. Extra Credit for early Learning Community Completion
3. Performance Report Updates
4. Patient Data Dashboard Updates
5. Specialist Requirements
6. Learning Community Events
7. CGM Coverage Loss Survey
8. Final Regional Meeting on Thursday



MCT2D Census Survey

- We have asked each practice to complete a census survey by December 1st .
- Survey is approximately 15 questions and asks about staffing (clinical pharmacist, nurse care manager, dietitian), insurance mix, EMR, and quality improvement resources.
- Reminders will be sent on November 14th and 24th to any practice who has not yet completed this.

Purpose: Ensure that we have accurate, up-to-date information on practices to support work with the Michigan Value Collaborative, and for us to determine how we can best support practices based on their resources.



Extra Points Opportunity

If physician and practice level VBR are both completed by 1/1/2026, your practice will earn 5 extra credit points on the VBR scorecard!

These points can be used to increase your practice's score up to 100 points. Practices who go over 100 points will not receive additional value based reimbursement.



Performance Reports

Later this month, we will be distributing performance reports for the PCP uACR measure, the PCP A1c measure, the Endo CGM interpretation measure, and the Nephro uACR measure.

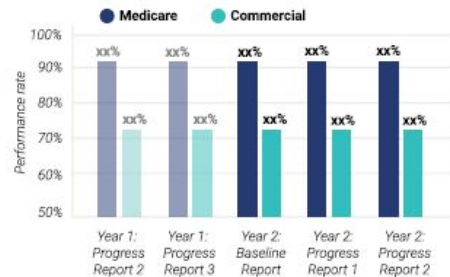
Reports will be available in the MCT2D Admin Portal and we will email you when these are available. Practices with Admin Portal access will be able to view their own reports.

Note: We are also working on adding specialist baseline rates to the admin portal so all of this information can be found in one place.

[Practice Name] Overview

Measure Information	Medicare	Commercial
Percentage of patients with controlled A1C	XX% <i>(xx patients)</i>	XX% <i>(xx patients)</i>
Percentage of patients with an A1C recorded after 6/01/2025	XX% <i>(xx patients)</i>	XX% <i>(xx patients)</i>
Eligible patients attributed to your practice as of xx/xx/xxxx	XXX	XXX

Performance Rates Overtime



Practice Performance Comparison

Which performance quartile does your practice fall in compared to other practices at your PO?

Medicare: % of patients with controlled A1C ($\leq 9\%$) by quartile



Commercial: % of patients with controlled A1C ($< 8\%$) by quartile



Measure: PCP HbA1c

Are you meeting the goal rate?

Medicare (A1C $\leq 9\%$)

TBD
(goal rate not yet available)

Commercial (A1C $< 8\%$)

TBD
(goal rate not yet available)

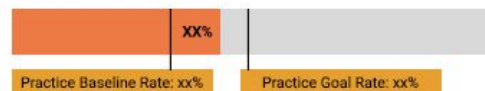
MCT2D Patient Data Dashboard



[Practice Name] Overview

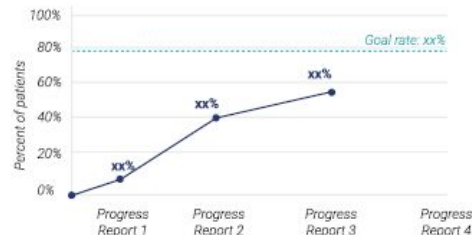
Measure: PCP uACR

Measure Performance



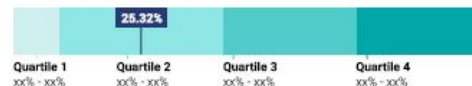
Measure Information	Number
Patients who have received a uACR since measurement period start	XXX
Eligible patients attributed to your practice as of xx/xx/xxxx	XXX

Percent of Patients Who have Received a uACR Since Measurement Period Start



Practice Performance Comparison

Which performance quartile does your practice fall in compared to other practices at your PO?



Are you meeting the goal rate yet?

Not Yet
xx%

Goal rate: xx%

MCT2D Patient Data Dashboard



Report generated xx/xx/xxxx

#

Target Rate for A1C

At this point, we have not received HEDIS benchmarks for commercial yet and BCBSM is working on estimated target for the Medicare portion.

We will share updates as soon as they're available and will continue to follow up with BCBSM on these rates.

Patient Data Dashboard Updates

Adding visualizations for each of the performance measures.

Estimated Release Date: 11/30/2025

Data will be through 8/31/2025 for
BCBSM/BCN/BCBSMA/BCNA

Data through 6/30/2025 for Medicaid

The Michigan Collaborative For Type 2 Diabetes
PATIENT DATA DASHBOARD

Legacy
Dashboard



LAST UPDATED
8/31/2025

Based on BCBSM, BCBSM MA, BCN, BCN-A, and Medicaid Claims and payer-neutral MIHIN clinical quality (all payer supplemental) data
BCBSM/BCN Claims data (1/1/2021-8/31/2025); Clinical data (1/1/2021-8/31/2025); Medicaid Claims data (1/1/2021-6/30/2025)

Click the icons below to navigate to a dashboard view.



Patient List

Filter a list of your patients included in the MCT2D dashboard - *Coming soon!*



Patient Profile

Access diabetes-related health information for a specific patient - *Coming soon!*



Summary Measures

View summary measures for your organization



Follow Up Lists

Access pre-filtered patient lists and save custom lists - *Coming soon!*



Pre-populated Reports

Real-time reports on critical topics



User Guide

Get help navigating the dashboard

MONITORING MEASURES

Primary Care uACR Measure

Population: Performance Population



Percentage of patients who have received a uACR for the Performance Population

10.8%

Numerator: Patients attributed to your organization who meet the measurement criteria who have received a uACR screening between 07/01/2025 - 08/31/2026
Denominator: Patients attributed to your organization who meet the measurement criteria

Description of the measure:

For all all BCBSM/BCN/BCBS-MA/BCN-A patients attributed to an MCT2D participating primary care practice who:

- Are aged 18-75 and
- Are included in the data registry and
- Have at least one claim (**for any service**) in the 14-month baseline period received by MCT2D (indicating that MCT2D is receiving claims for that patient)

The population is not locked until 05/31/26.

[Read Performance Measure Details](#)

Nephrology uACR Measure

Population: Performance Population



Percentage of patients who have received a uACR for the Performance Population

14.0%

Numerator: Patients attributed to your organization who meet the measurement criteria who have received a uACR screening between 07/01/2025 - 08/31/2026
Denominator: Patients attributed to your organization who meet the measurement criteria

Description of the measure:

For all all BCBSM/BCN/BCBS-MA/BCN-A patients attributed to an MCT2D participating nephrology practice who:

- Are aged 18-75 and
- Are included in the data registry and
- Have at least one claim (**for any service**) in the 14-month baseline period received by MCT2D (indicating that MCT2D is receiving claims for that patient)


The population is not locked until 05/31/26.

[Read Performance Measure Details](#)

PRESCRIBING MEASURES

Endocrinology CGM Interpretation Measure

Population: Performance Population

 Expand

Percentage of patients who have at least one CGM interpretation for the Performance Population



Numerator: Patients who meet the measurement criteria who have had at least one 95251 billing claim between 07/01/2025 - 08/31/2026
Denominator: Patients who meet the measurement criteria with a claim for a CGM device between 07/01/2025 - 06/30/2026

Description of the measure:
For all all BCBSM/BCN/BCBS-MA/BCN-A patients attributed to an MCT2D participating endocrinology practice who:

- Are aged 18 and above
- Meet the MCT2D T2D criteria for inclusion in the data registry
- Have had at least one claim for a CGM device within the 12-month intervention period for a CGM device claim (including 95251).

The population is not locked until 05/31/26.

[Read Performance Measure Details](#)

Primary Care uACR Measure

Population: Performance Population

Close 

Percentage of patients who have received a uACR for the Performance Population



Numerator: Patients attributed to your organization who meet the measurement criteria who have received a uACR screening between 07/01/2025 - 08/31/2026
Denominator: Patients attributed to your organization who meet the measurement criteria

Description of the measure:
For all all BCBSM/BCN/BCBS-MA/BCN-A patients attributed to an MCT2D participating primary care practice who:

- Are aged 18-75 and
- Are included in the data registry and
- Have at least one claim (for any service) in the 14-month baseline period received by MCT2D (indicating that MCT2D is receiving claims for that patient)

The population is not locked until 05/31/26.

[Read Performance Measure Details](#)

Percentage of patients who have received a uACR by practice for the Performance Population



uACR PCP patients by Service Date
Patient Count: 5,121

Patient Name	

Reminder: Final Regional Meeting on Thursday



Wednesday, October 22nd
6pm-8pm



Thursday, November 13th
6pm-8pm



- If your PCP clinical champion did not attend the first meeting, please follow up with them to ensure they attend this final one.
- Attendance is up to date in MCT2D Admin Portal.
- PCP ONLY attendance.

CGM Coverage Loss Survey

- MCT2D distributed a half page flyer yesterday, for practices to share with patients to share their stories about how having a CGM has impacted their care.
- Survey will be available until December 12th.
- Will share patient responses with insurers to demonstrate value of CGM.



HAVE YOU USED A CGM?

SHARE YOUR FEEDBACK!



Pictured: Dexcom G7 & Freestyle Libre 3 Plus CGMs

Every patient story matters!
We want to hear what continuous glucose monitors (CGMs) mean to you.

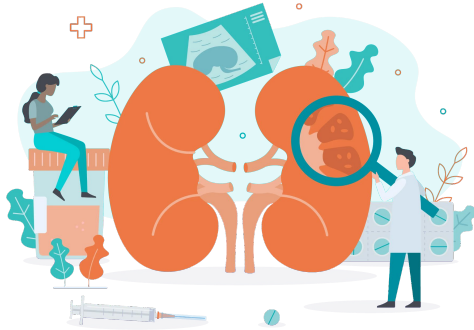
Sharing your experience will help others with type 2 diabetes access this critical resource.

Take our 5-minute survey!
Scan the QR code above or go to:
www.michmed.org/ZxA4R



Specialist Clinical Champions Meetings

Nephrology Clinical Champions Meeting



Tuesday, October 7th
6pm-8pm

Endocrinology Clinical Champions Meeting



Thursday, November 6th
6pm-8pm

Both specialist clinical champion meetings have occurred, with attendance tracked in the Admin Portal. We'll follow up with specialists who missed the sessions to offer a makeup opportunity. Slides from both meetings have been shared with participants.

Specialist Dashboard Logins/Endocrinologist Attestation

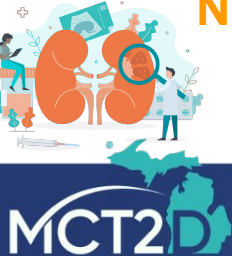
The final requirement for specialists for this VBR year is to log into the patient data dashboard at least once, and for endocrinologists to sign an attestation that they have read our document on how patients are being attributed to them.

Link to Attestation/Data Form:

<https://portal.mct2d.org/portal/endo-attribution-form>

No endocrinologists have signed this yet- please remind them!

Due 12/31



Next Learning Community Event: This Friday, 11/14

Final learning community event of the year - for practices trying to earn their 5 extra credit points, an easy way to receive them and get CME as well!

Note: Learning community events count for physician level learning community credit, not practice level.



PREGNANCY AND
TYPE 2 DIABETES

11/14/25

with Jennifer Wyckoff, MD



Next Month's PO Call Dates

Monday, December 15th at 11am

Wednesday, December 17th at 2pm

Please Note: These have been moved back a week from their normal cadence due to a conference that MCT2D is attending.